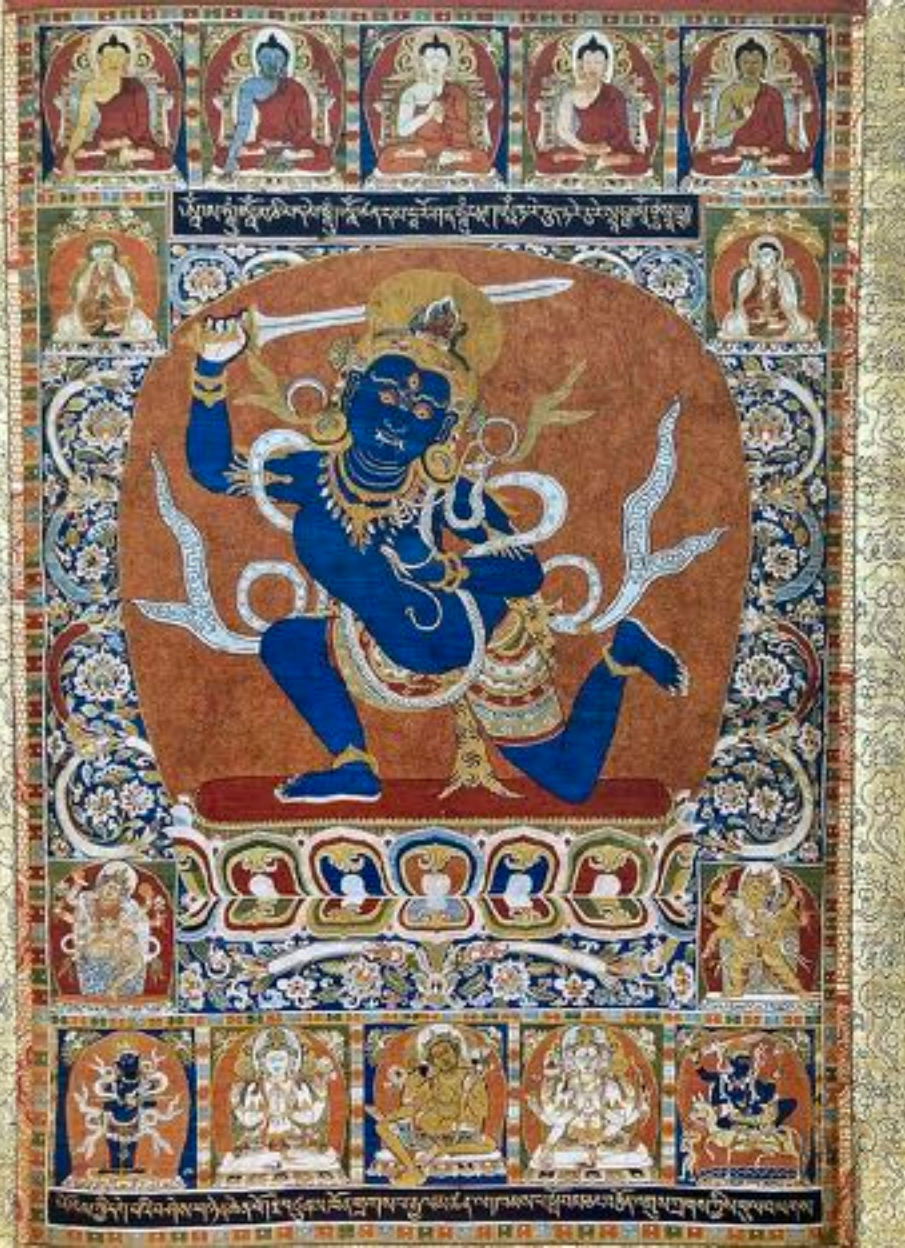




detail depicting Manjushri from *Vimalakirti and the Doctrine of Nonduality* by Wang Zhenpeng (active ca. 1280-1329) dated 1308; ink on silk. The Dillon Fund Gift, 1980 (1980.276), The Metropolitan Museum of Art, New York



Manjushri Bodhisattva (Jap: Monju Bosatsu)
with 8 sacred Sanskrit syllables
Japan, Nanbokuchu period (1336-1392)
The Metropolitan Museum of Art, New York



Yidam Acala

Northern China, Yuan dynasty late 13th to end of 14th c
silk, pearls, threads; 87 x 57 cm

Tibet Museum, Lhasa



Vajarpani as Hercules attending
Shakyamuni Buddha

2nd c

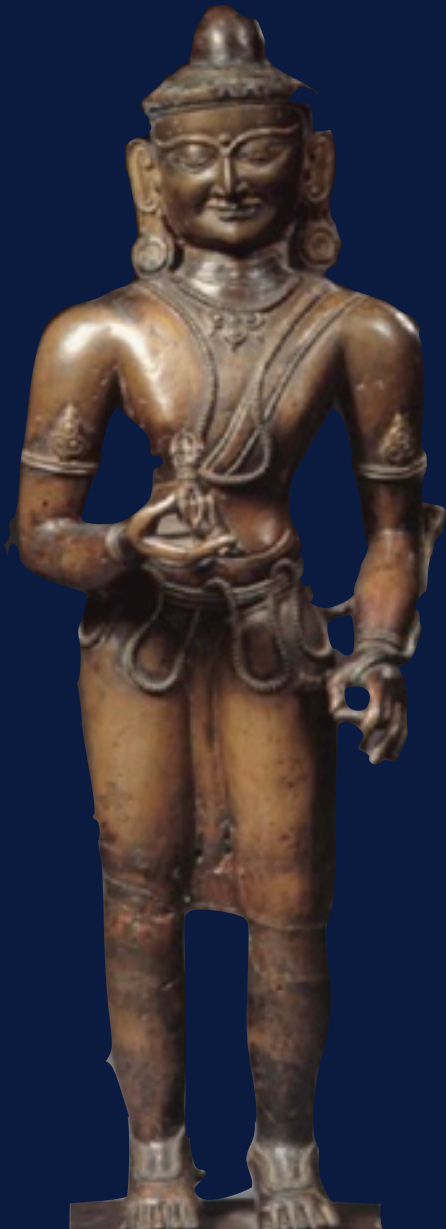
[Wikipedia Commons](#)



left: Nio
by Unkei 1203
Japan, Kamakura period
South Gate, Todaiji, Nara
wood, 8.08 meters

right: Vajrapani
(vajrayana fierce form)
Northern India, 11th c
metal
Private
HAR (item no. 59255)





left: Vajrapani Bodhisattva
Tibet, 12th c
Metal
Private
HAR (item no. 20361)



right: Vajrapani Bodhisattva
Nepal, 11th c
metal
Private
HAR (item no. 19879)



Vajrapani

Dunhuang, northwest China, 9th c
ink and colours on silk, 55 x 14.5 cm

The British Museum, London