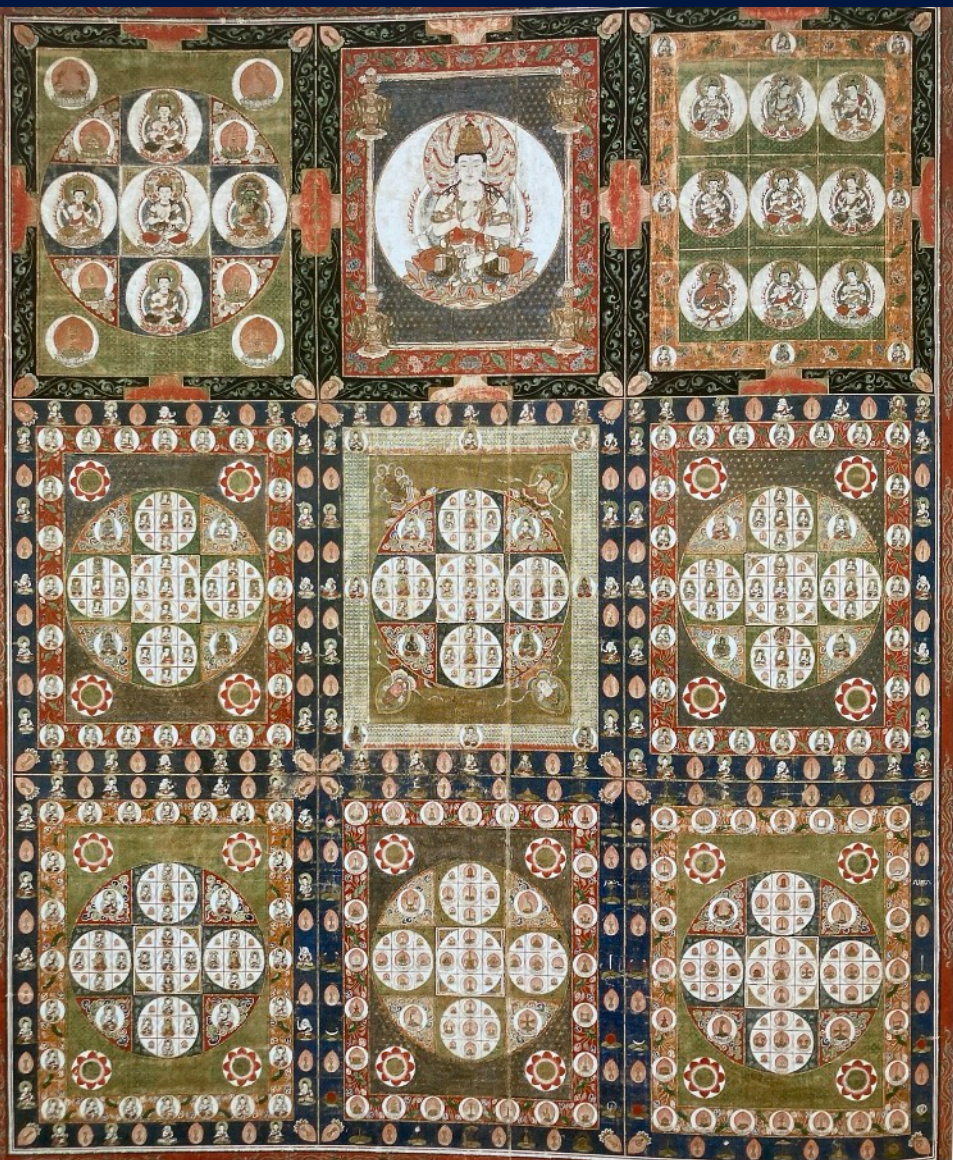
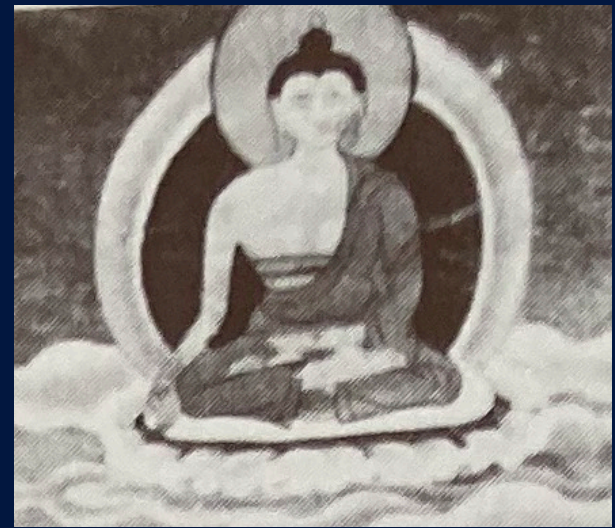


The Matrix World Mandala,
(part of a pair: The Diamond World Mandala)
Japan, Muromachi period, 15-16th c
hanging scroll, ink on silk, 290 x 198 cm
National Gallery of Victoria. Purchased 1971.



The Diamond World Mandala,
(part of a pair: The Matrix World Mandala)
Japan, Muromachi period, 15-16th c
hanging scroll, ink on silk, 290 x 198 cm
National Gallery of Victoria. Purchased 1971.



Four Arhats,
Central Tibet, 19th c;
clockwise from top left: Angja, Ajita, Vanavasin and
Kalika. Upper left corner is Ratnasambhava
(exhibition catalog: *Sacred Art of Tibet*, published
by Dharma Publishing 1974)